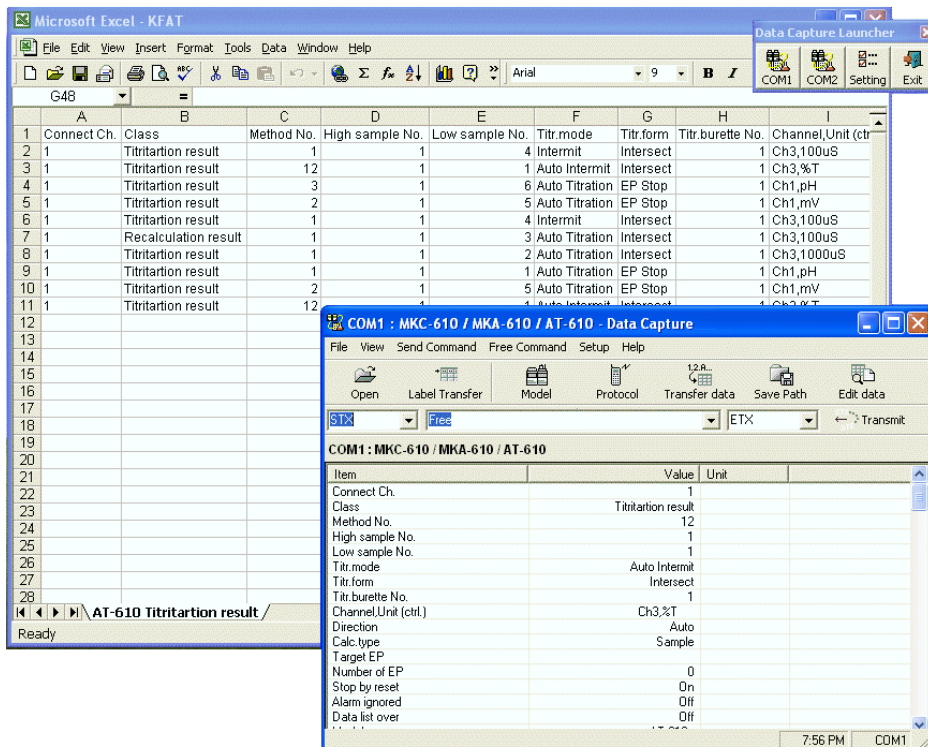




Data Capture Software

SOFT-CAP_E

The Data Capture software compatible with Windows® 98SE/ME/NT/2000/XP can connect your personal computer with various KEM analytical instruments via RS-232C port so that measurement results can be downloaded directly to Microsoft® Excel workbook or stored in CSV file format. Maximum four KEM instruments can be connected and controlled by this software, and the output data from each unit can be edited in the user's desired format and saved in the file.



Feature :

1. Measurement results from maximum four KEM instruments can be exported to Excel workbooks (compatible with Excel 97/2000/2002/2003).
2. The output data can also be filed in CSV format so that the data is made best use of in the user's Excel spreadsheet.
3. Maximum four different KEM models can be connected with a computer or up to two instruments of the same model and another one or two units of different model can be linked simultaneously.
4. Data Capture works for KEM's analytical instruments of the following models :

Density meters : DA-520, DA-510, DA-505, DA-500, DA-100, DA-110

Volumetric KF moisture titrators : MKA-610, MKA-520, MKS-520, MKA-510N, MKS-510N, MKA-510, MKS-510, MKS-500

Coulometric KF moisture titrators : MKC-610, MKC-510N, MKC-510, MKC-520, MKC-500, MKC-501

Automatic potentiometric titrators : AT-610, AT-510, AT-500N, AT-500, AT-420, AT-400

Refractometers : RA-520N, RA-500N, RA-520, RA-500, RA-510, RA-410

Thermal conductivity meters : QTM-500

Applications :

Data Capture software can not only display and transfer data of measurement results to Excel spreadsheet or save in CSV format for editing and filing, but control the connected unit or units for the following functions of each model:

Model	Control commands by Data Capture from User's computer
DA-520, DA-510, DA-505, DA-500	1) Start density measurement 2) Start calibration measurement 3) Start check measurement 4) Reset measurement 5) Start multiple sample changer
DA-100	1) Start density measurement 2) Reset measurement
DA-110	No control command
MKA-520, MKS-520, MKA-510N, MKS-510N, MKA-510, MKS-510, MKS-500	1) Start moisture measurement 2) Start pre-titration 3) Reset titration 4) Reset statistics
MKC-520, MKC-510N, MKC-510, MKC-501, MKC-500	1) Start moisture measurement 2) Start pre-titration 3) Reset titration 4) Reset statistics (for MKC-520, MKC-510N, MKC-510 only)
AT-510	1) Start titration 2) Reset titration 3) Pause titration 4) Cancel pause 5) Start multiple sample changer 6) Reset multiple sample changer
AT-420, AT-400, AT-500N, AT-500	1) Start titration 2) Reset titration 3) Pause titration 4) Cancel pause 5) Start multiple sample changer
RA-520, RA-500, RA-520N, RA-500N	1) Start measurement 2) Start calibration 3) Start check measurement 4) Reset measurement 5) Start multiple changer
RA-410	1) Start measurement 2) Start calibration 3) Start check measurement 4) Reset measurement
RA-510	1) Start measurement 2) Start zero calibration 3) Reset measurement 4) Reset statistics 5) Skip measurement sequence 6) Start multiple changer
QTM-500	1) Start measurement 2) Reset measurement 3) Reset statistics
MKA-610, MKC-610, AT-610	No control command

Specifications :

Control command	"Data Capture Software" as 1 x CD-ROM
Function	1) Export directly to Microsoft® Excel 2) Store in CSV format 3) Display on user's computer screen
Control command	See the chart of Model and Control commands
Signal interface	RS-232C synchronized signal method Signal code : ASCII Baud rate : 300/600/1200/2400/4800/9600/14400/19200 Start bit : 1 bit (fixed) Data length : 7/8 bits Stop bit : 1/1.5/2 bits Parity : even, odd, no parity
Flow control	Not available
Procedure	Sequence of transmittal not limited
*Connectable instrument	DA-520 ¹⁾ DA-510 ¹⁾ DA-505 ¹⁾ DA-500 ¹⁾ DA-100 ⁴⁾ DA-110 ²⁾ MKA-520 ¹⁾ MKS-520 ¹⁾ MKA-510N ¹⁾ MKS-510N ¹⁾ MKA-510 ¹⁾ MKS-510 ¹⁾ MKS-500 ¹⁾ MKC-520 ¹⁾ MKC-510N ¹⁾ MKC-510 ¹⁾ MKC-501 ¹⁾ MKC-500 ¹⁾ AT-510 ¹⁾ AT-420 ³⁾ AT-400 ³⁾ AT-500N ¹⁾ AT-500 ¹⁾ RA-520N ¹⁾ RA-500N ¹⁾ RA-520 ¹⁾ RA-500 ¹⁾ RA-410 ¹⁾ RA-510 ³⁾ QTM-500 ³⁾ MKA-610 ¹⁾ MKC-610 ¹⁾ AT-610 ¹⁾

*Option : connection cable (L=2m) [Necessary] ¹⁾98030002 ²⁾980320003 ³⁾980324194 ⁴⁾980325305

Recommended system

Personal computer	Windows® 98SE/ME/NT/2000/XP with at least Pentium II 233MHz equivalent CPU and Excel 97/2000/2002/2003 (For NT, Version 4.0 Service Pack 5 or later)		
Memory	At least 128MB		
Hard disk space	At least 10MB		
Display	640 by 480 pixel resolution or better		
Drive	CD-ROM		
Interface	Printer (Parallel) Port [D-SUB 25 pins]	Interface	D-SUB port : 1 (OCT. 2005--)
Serial port	RS-232C D-SUB 9 pins : 1 port is necessary		

KEM
KYOTO ELECTRONICS
MANUFACTURING CO.,LTD.

Overseas Division : 8-3 Niban-cho Chiyoda-ku TOKYO 102-0084, JAPAN

Fax : +81-3-3237-0537, Phone : +81-3-3239-7333

URL : <http://www.kyoto-kem.com>



Distributed by

Specifications and design subject to change for improvements without notice. Printed in Japan.

57KEMA